

Integration Data

SPECIFIED CONTROL POINTS : UTM ZONE 17, NAD83 (CSRS)
 LEICA SMARTNET RTK REFERENCE NETWORK

COORDINATE VALUES ARE TO AN URBAN ACCURACY IN ACCORDANCE WITH SECTION 14 (2) OF O.REG 216/10
 COORDINATES CANNOT, IN THEMSELVES, BE USED TO RE-ESTABLISH CORNERS OR BOUNDARIES SHOWN ON THIS PLAN.

POINT ID	NORTHING	EASTING
A	4770616.00	419197.91
B	4771025.74	419201.72

Metric DISTANCES AND COORDINATES SHOWN ON THIS PLAN ARE IN METRES AND CAN BE CONVERTED TO FEET BY DIVIDING BY 0.3048

Plan 25M - 102

I CERTIFY THAT THIS PLAN IS REGISTERED IN THE LAND REGISTRY OFFICE FOR THE LAND TITLES DIVISION OF LAMBTON (NO.25) AT 18:48 O'CLOCK ON THE 29th DAY OF November 2023. AND ENTERED IN THE REGISTER FOR P.I.N. 43072 - 0393 (LT)

AND REQUIRED CONSENTS ARE REGISTERED AS PLAN DOCUMENT NO. LA305291

Sammy Wilkison
 REPRESENTATIVE FOR THE LAND TITLES DIVISION OF LAMBTON (NO.25)

NOTE : THIS PLAN COMPRISES ALL OF P.I.N. 43072 - 0393 (LT)

Plan of Subdivision of:
 PART OF BLOCK 25, PLAN 25M-56
 MUNICIPALITY OF LAMBTON SHORES
 COUNTY OF LAMBTON
 MONTEITH & SUTHERLAND LIMITED

CURVE SCHEDULE

CURVE	RADIUS	ARC	CHORD	CHORD BEARING
C1	18.000	2.705	2.702	N62°07'20"E
C2	18.305	16.152	15.633	N87°51'40"W
C3	18.305	13.557	13.249	N41°22'10"W
C4	18.305	17.292	16.656	N06°54'40"E
C5	18.000	11.556	11.358	N13°55'40"W
C6	18.000	13.449	13.138	N25°52'10"E
C7	18.000	13.400	13.093	N68°36'10"E
C8	18.000	10.522	10.373	N73°19'30"W
C9	17.000	13.818	13.441	N29°52'50"W
C10	17.000	13.582	13.224	N16°17'40"E
C11	17.000	15.244	14.739	N64°52'20"E
C12	17.000	14.492	14.058	N65°01'10"W
C13	17.000	14.231	13.819	N16°36'50"W
C14	17.000	13.919	13.534	N30°49'30"E

Owner's Certificate:

THIS IS TO CERTIFY THAT:

- LOTS 1 TO 50 INCLUSIVE, BLOCKS 53 AND 55, THE RESERVE BLOCKS 51, 52, 54 AND THE STREETS NAMELY FIELD STREET, FRASER CRESCENT, HALES STREET AND VANROOYEN COURT HAVE BEEN LAID OUT IN ACCORDANCE WITH MY INSTRUCTIONS.
- THE STREETS ARE DEDICATED TO THE CORPORATION OF THE MUNICIPALITY OF LAMBTON SHORES AS A PUBLIC HIGHWAY.

Wellington, Larry

DATED THE 7th DAY OF SEPT 2023.

Larry Wellington
 LARRY WELLINGTON

Wellington, Vaughn

DATED THE 7th DAY OF SEPT 2023.

Vaughn Wellington
 VAUGHN WELLINGTON

Bearing Reference:

BEARINGS ARE DERIVED FROM THE SOUTHERN ONTARIO LEICA SMARTNET RTK REFERENCE NETWORK AND ARE BASED ON THE NAD83 (CSRS)

DISTANCES ON THIS PLAN ARE GROUND AND CAN BE CONVERTED TO GRID BY MULTIPLYING BY THE COMBINED SCALE FACTOR OF 0.999647.

ALL PLANTED BARS ON THIS PLAN ARE IB'S UNLESS OTHERWISE NOTED.

Notes

SB DENOTES 25mm X 25mm X 1.22m STANDARD IRON BAR
 SSB DENOTES 25mm X 25mm X 0.61m SHORT STANDARD IRON BAR
 IB DENOTES 16mm X 16mm X 0.61m IRON BAR
 IB* DENOTES 19mm diameter X 0.61m ROUND IRON BAR
 S DENOTES SURVEY MONUMENT FOUND
 S* DENOTES SURVEY MONUMENT SET AND MARKED MS
 W DENOTES WITNESS
 (U) DENOTES ORIGIN UNKNOWN
 (NS) DENOTES MONTEITH & SUTHERLAND, O.L.S.
 (P) DENOTES PLAN 25M-56
 (P2) DENOTES PLAN 25M-55
 C.L.F. DENOTES CHAIN LINK FENCE
 N.E.R. DENOTES NORTH OF EREMONT ROAD
 E.P.C. DENOTES EXAGGERATED FOR CLARITY

2275368 Ontario Inc.

I HAVE THE AUTHORITY TO BIND THE CORPORATION

DATED THE 7th DAY OF SEPTEMBER 2023.

Mike Wellington
 MIKE WELLINGTON
 PRESIDENT

2275369 Ontario Inc.

I HAVE THE AUTHORITY TO BIND THE CORPORATION

DATED THE 11th DAY OF SEPT 2023.

Joel Wellington
 JOEL WELLINGTON
 PRESIDENT

Surveyor's Certificate:

I CERTIFY THAT:

- THIS SURVEY AND PLAN ARE CORRECT AND IN ACCORDANCE WITH THE SURVEY'S ACT, THE SURVEYORS ACT AND THE LAND TITLES ACT AND THE REGULATIONS MADE UNDER THEM.
- THE SURVEY WAS COMPLETED ON THE 7th DAY OF Sept, 2023.

T. Martin Nisbet
 T. MARTIN NISBET
 ONTARIO LAND SURVEYOR

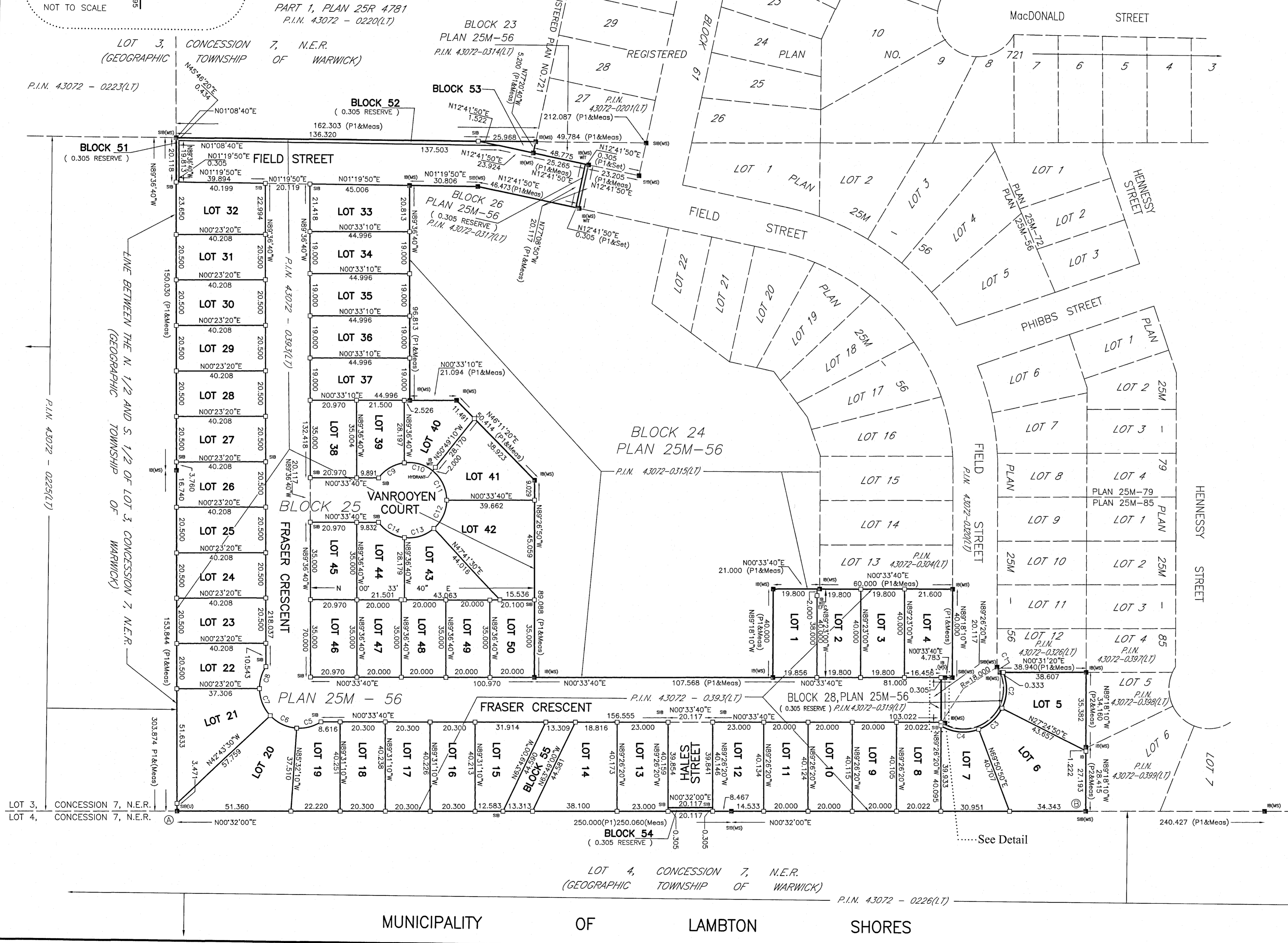
THIS PLAN OF SURVEY RELATES TO AOLS PLAN SUBMISSION FORM NUMBER V24926.

Planning Act Approval

APPROVED BY THE CORPORATION OF THE MUNICIPALITY OF LAMBTON SHORES UNDER SECTION 51 OF THE PLANNING ACT : THIS 26th DAY OF September, 2023.

File #: SD-2006-04

Donny Boyce



LOT 3, CONCESSION 7, N.E.R. (GEOGRAPHIC TOWNSHIP OF WARWICK) P.I.N. 43072 - 0223(LT)

LOT 4, CONCESSION 7, N.E.R. (GEOGRAPHIC TOWNSHIP OF WARWICK) P.I.N. 43072 - 0226(LT)

MUNICIPALITY OF LAMBTON SHORES

Monteith & Sutherland LIMITED
 Ontario Land Surveyors | Professional Engineers

Samira: (519)542-4300
 Toronto: (647)343-4603
 email: contact@mssurvey.com
 web: www.mssurvey.com

FOR-1019
 E-2287