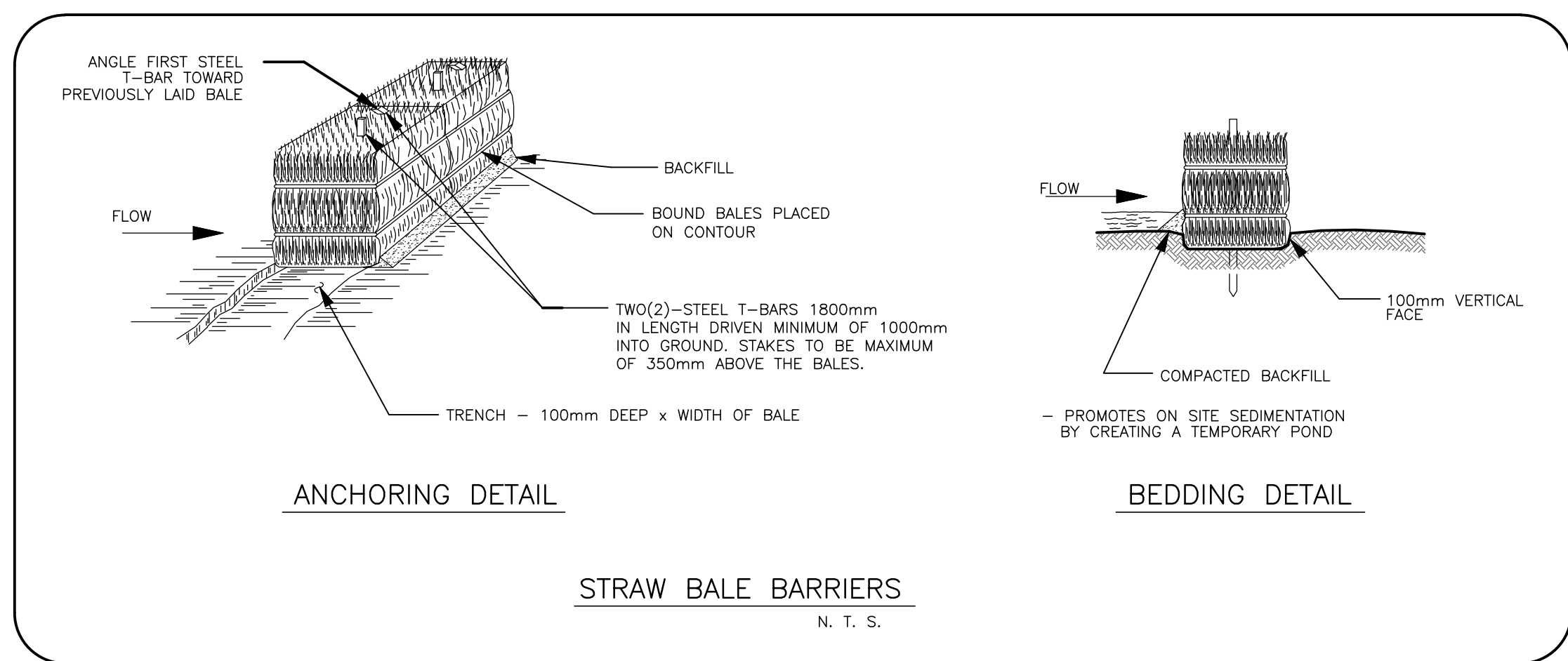
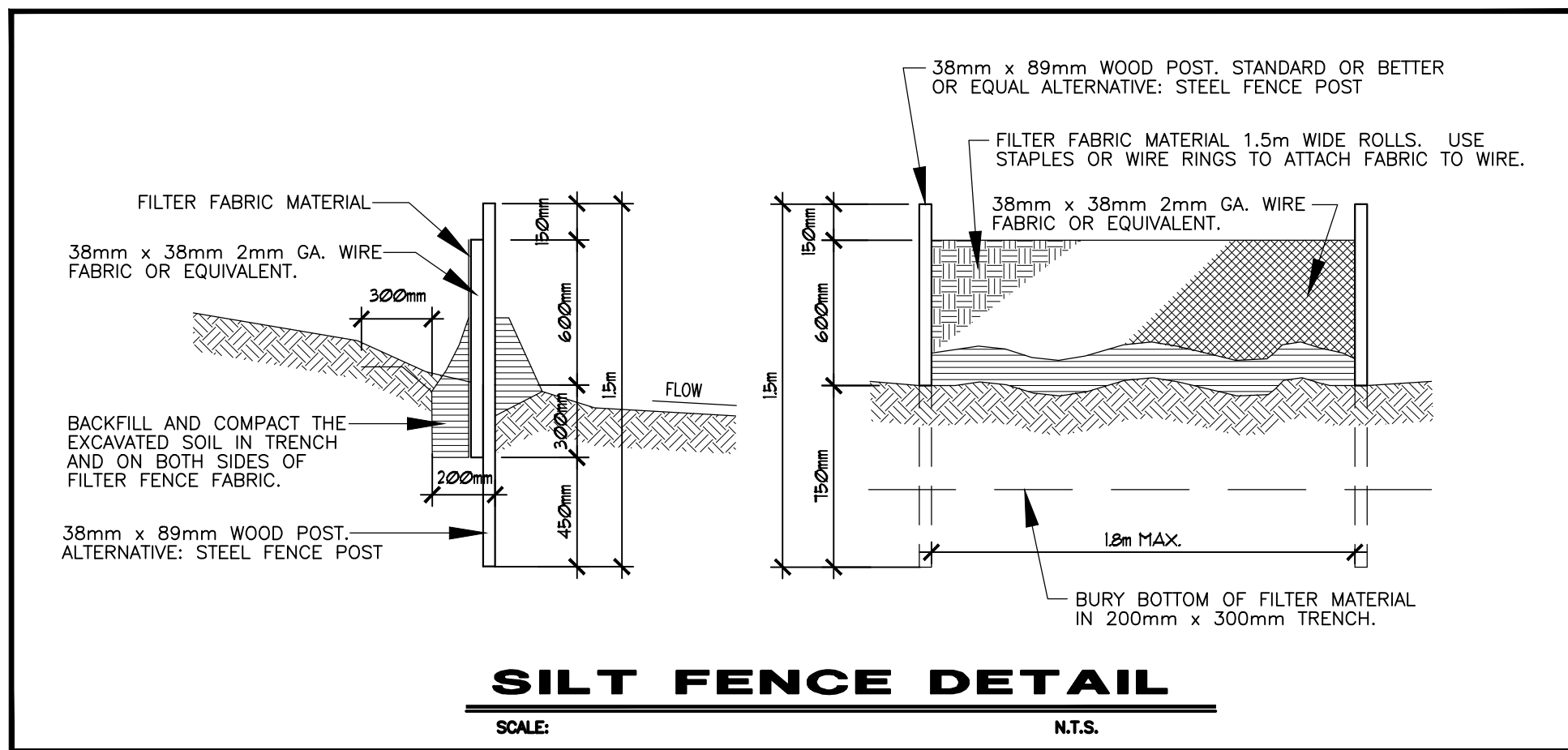


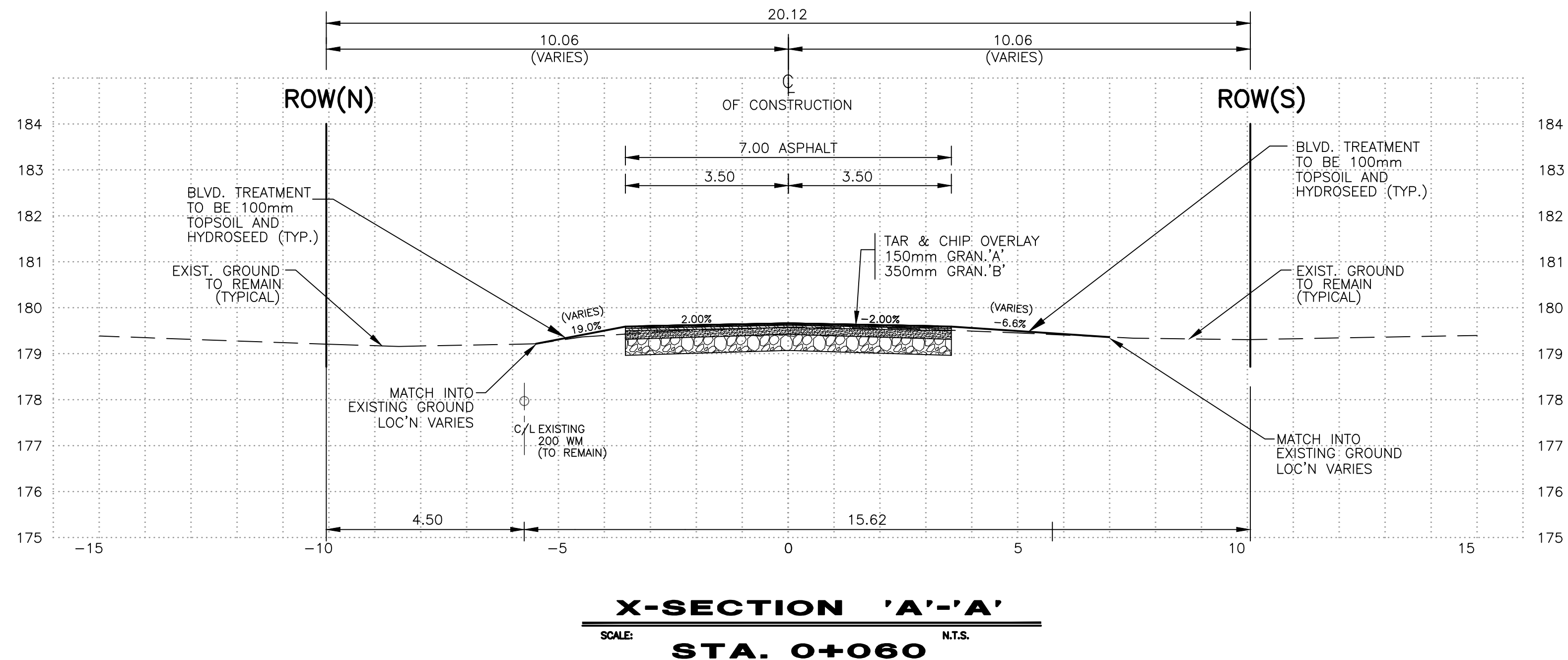
SEDIMENT CONTROL MEASURE NOTES

1. PROTECT ALL EXPOSED SURFACES AND CONTROL ALL RUNOFF DURING CONSTRUCTION.
2. ALL EROSION CONTROL MEASURES ARE TO BE IN PLACE BEFORE STARTING CONSTRUCTION AND REMAIN IN PLACE UNTIL RESTORATION IS COMPLETE.
3. MAINTAIN EROSION CONTROL MEASURES DURING CONSTRUCTION.
4. INSPECTION AND CLEANING OF THE SEDIMENTATION TRAPS SHOULD BE CARRIED OUT REGULARLY . CLOGGED FILTER MATERIALS SUCH AS CRUSHED STONE, STRAW BALES OR FILTER CLOTH SHOULD BE REPLACED AS REQUIRED.
5. ALL COLLECTED SEDIMENT TO BE DISPOSED OF AT AN APPROVED LOCATION.
6. MINIMIZE AREA DISTURBED DURING CONSTRUCTION.
7. STOCKPILES OF EARTH AND/OR TOPSOIL SHOULD BE LOCATED AND PROTECTED TO ENSURE MINIMUM ENVIRONMENTAL INTERFERENCE . STOCKPILES SHOULD NOT BE LOCATED CLOSE BY AGENT TO DITCHES OR ROAD ALLOWANCES . A PERIMETER DITCH LEADING TO A SETTLING AREA , OR A SEDIMENTATION BASIN , SHOULD BE INSTALLED AROUND THE STOCKPILE.
8. ALL DEWATERING WATER OR WATER PUMPED FROM EXCAVATIONS TO BE DISPOSED OF IN AN APPROVED SEDIMENTATION BASIN.
9. PROTECT ALL CATCHBASINS, MAINTENANCE HOLES AND PIPE ENDS FROM SEDIMENT INTRUSION WITH GEOTEXTILE (TERRAFIX 270R).
10. KEEP ALL SUMPS CLEAN DURING CONSTRUCTION.
11. PREVENT WIND-BLOWN DUST.
12. STRAW BALES TO BE USED IN LOCALIZED AREAS AS SHOWN AND AS DIRECTED BY THE ENGINEER DURING CONSTRUCTION.
13. STRAW BALES TO BE TERMINATED BY ROUNDING BALES TO CONTAIN AND FILTER RUNOFF.
14. OBTAIN APPROVAL FROM CONSERVATION AUTHORITY PRIOR TO CONSTRUCTION.
15. ALL SILT FENCING AND DETAILS ARE AT THE MINIMUM TO BE CONSTRUCTED IN ACCORDANCE WITH THE MINISTRY OF NATURAL RESOURCES GUIDELINES ON EROSION AND SEDIMENT CONTROL FOR URBAN CONSTRUCTION SITES.
16. ALL OF THE ABOVE NOTES AND ANY SEDIMENT AND EROSION CONTROL MEASURES AND ANY ADDITIONAL SEDIMENT AND EROSION CONTROL MEASURES ARE AT THE MINIMUM TO BE IN ACCORDANCE WITH THE MINISTRY OF NATURAL RESOURCES GUIDELINES ON EROSION AND SEDIMENT CONTROL FOR URBAN CONSTRUCTION SITES



GENERAL NOTES:

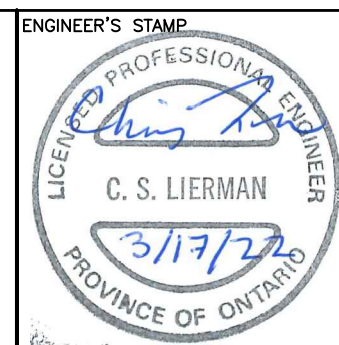
- 1. UTILITIES AND SUPPORT**
Prior to commencing construction on the road allowances, all existing underground and overhead utilities shall be located and marked. Any utilities damaged or disturbed during construction shall be replaced to the satisfaction of the governing body at the Contractor's expense. Any pole support shall be carried out by the appropriate authority and not the Contractor, but any costs are at the expense of the Contractor. If hydro poles need to be supported during construction, the Contractor shall make all necessary arrangements with Hydro One. Utility locations shown on these drawings have been obtained from drawings and data believed to be correct, but cannot be guaranteed to be correct. The Contractor will be responsible for all costs associated with the excavation around and/or relocation of any underground utilities under this contract.
- 2. PROFILES**
Grades, elevations, distances and alignment as shown on the drawings represent the theoretical centerline of the watermain and sewers for purposes of design and the preparation of as built drawings. All profiles of existing ground are approximate and are along the centerline of the traveled portion of the road allowance.
- 3. TREE PROTECTION**
All existing trees, shrubs, and landscaping are to be protected in accordance with the project specifications unless otherwise stated by the Engineer or shown on the drawings.
- 4. MAINTENANCE OF FLOW**
All existing surface and underground drainage systems are to be maintained and restored during construction to the satisfaction of the Engineer.
- 5. CONSTRUCTION AND DETOUR SIGNING**
Minimum construction and detour signing shall be as per "Book 7 of the Ontario Traffic Manual". Drawings to be submitted to the Engineer for approval prior to commencement of the project.
- 6. WORK WITHIN PRIVATE PROPERTY**
No work shall be carried out on private property without written permission from the owner.
- 7. SEWER LOCATIONS**
The shown location and alignment of the existing sanitary and storm sewers is from information obtained from the Municipality of Lambton Shores. The accuracy of these locations is not guaranteed.
- 8. WATER SERVICES**
The location and alignment shown (and not shown) of existing water services, including curb stops, is not guaranteed.



EXISTING SERVICES	DRAWING #, SOURCE	DATE	AS CONSTRUCTED SERVICES	COMPLETION	DETAILS	No.	REVISIONS	DATE	CONSULTANT
					DESIGN CSL	1.	1st SUBMISSION	MAR.17.2022	SPIRIT
					DRAWN BY JA				
					CHECKED CSL				
					APPROVED CSL				
					DATE MARCH 2022				
					222038-DETAILS				

CONSULTANT OR DIVISION

SPRIET ASSOCIATES
LONDON LIMITED
CONSULTING ENGINEERS
155 YORK STREET — LONDON (519) 672-4100 — N6A 1A8



SCALE
HORIZ.
VERT.

The horizontal scale is a ruler with a zero mark at the left end. The first centimeter is divided into millimeters, with alternating black and white squares. The rest of the ruler is shaded gray. The vertical scale is similar, with a zero mark at the top and alternating black and white squares for the first centimeter, followed by a gray-shaded section.

TITLE	DEFORE DRIVE ROAD EXTENSION 2022
	MISCELLANEOUS NOTES AND DETAILS

PROJECT No.	222038
SHEET No.	2
PLAN FILE No.	