



THE MUNICIPALITY OF LAMBTON SHORES MUNICIPAL COUNCIL

LAWSS CAPITAL PROGRAM JOINT APPLICATION FOR FUNDING

March 15, 2022

LAWSS Strategy in 2022:

Step #1-

Determine level of Municipal Support for Joint Funding Application for LAWSS Projects.

Step #2-

Determine Municipal Member's tolerance for utilizing debt to achieve LAWSS Capital Program.
(based on Step #1)

Step #3-

Develop updated water rate forecast for LAWSS over 20-year planning horizon.
(based on Step #1 & #2)

Step 1: Determine level of Municipal support for Joint Funding Application for LAWSS Projects

LAWSS requests support from the Municipality of Lambton Shores Municipal Council for a Joint Funding Application and commitment to its portion (approximately 2%) of 1/3 of \$135 million over the next twenty years for LAWSS Capital Projects.

Why is it recommended?

- LAWSS projects are important to Lambton County from an economic development, water reliability and security perspective.

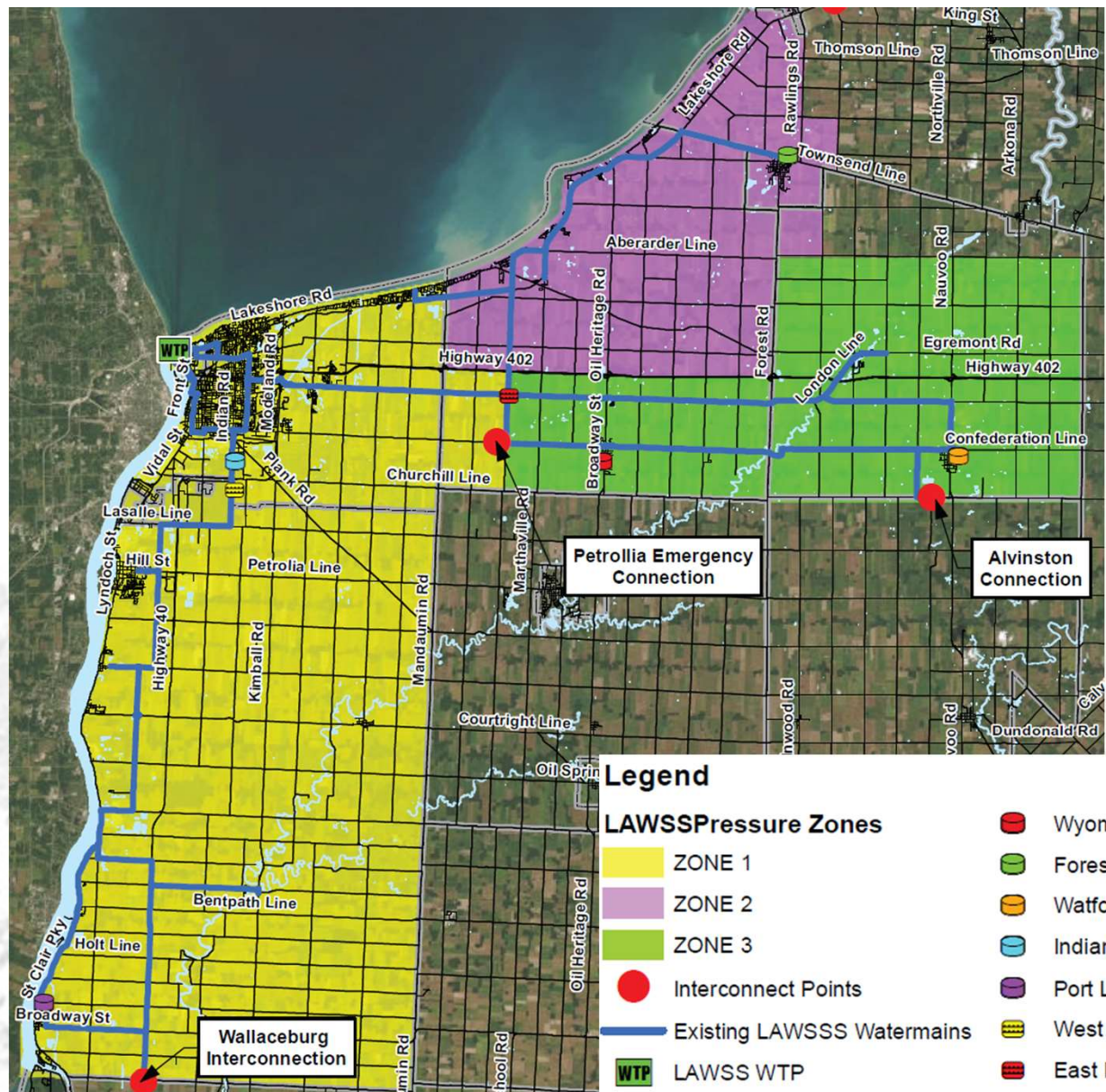
Why 1/3 ?

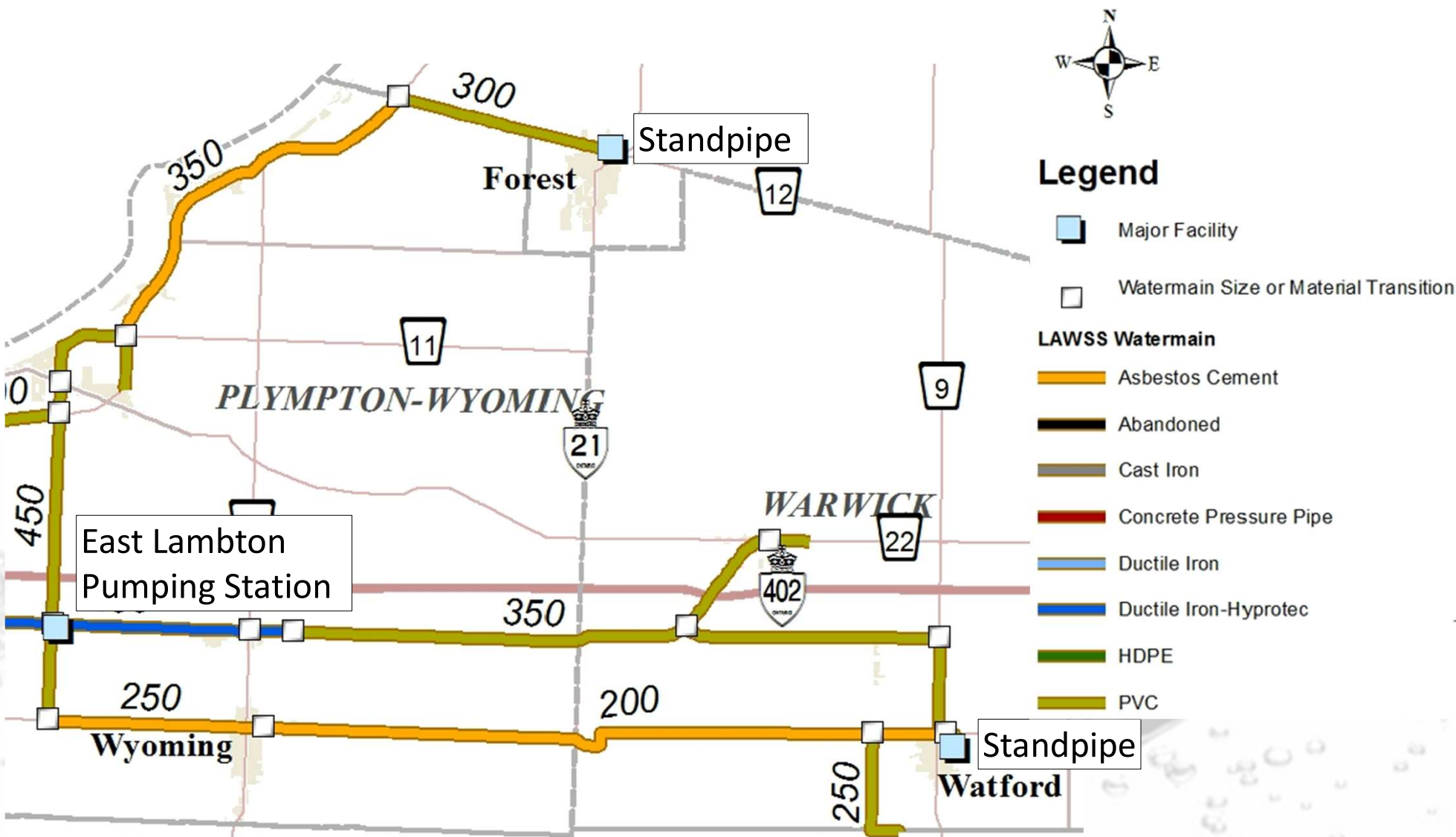
- Typically, federal and provincial monies will target 2/3 funding. If approved, LAWSS staff will proceed with a Joint Application for funding immediately.

Why 2% ?

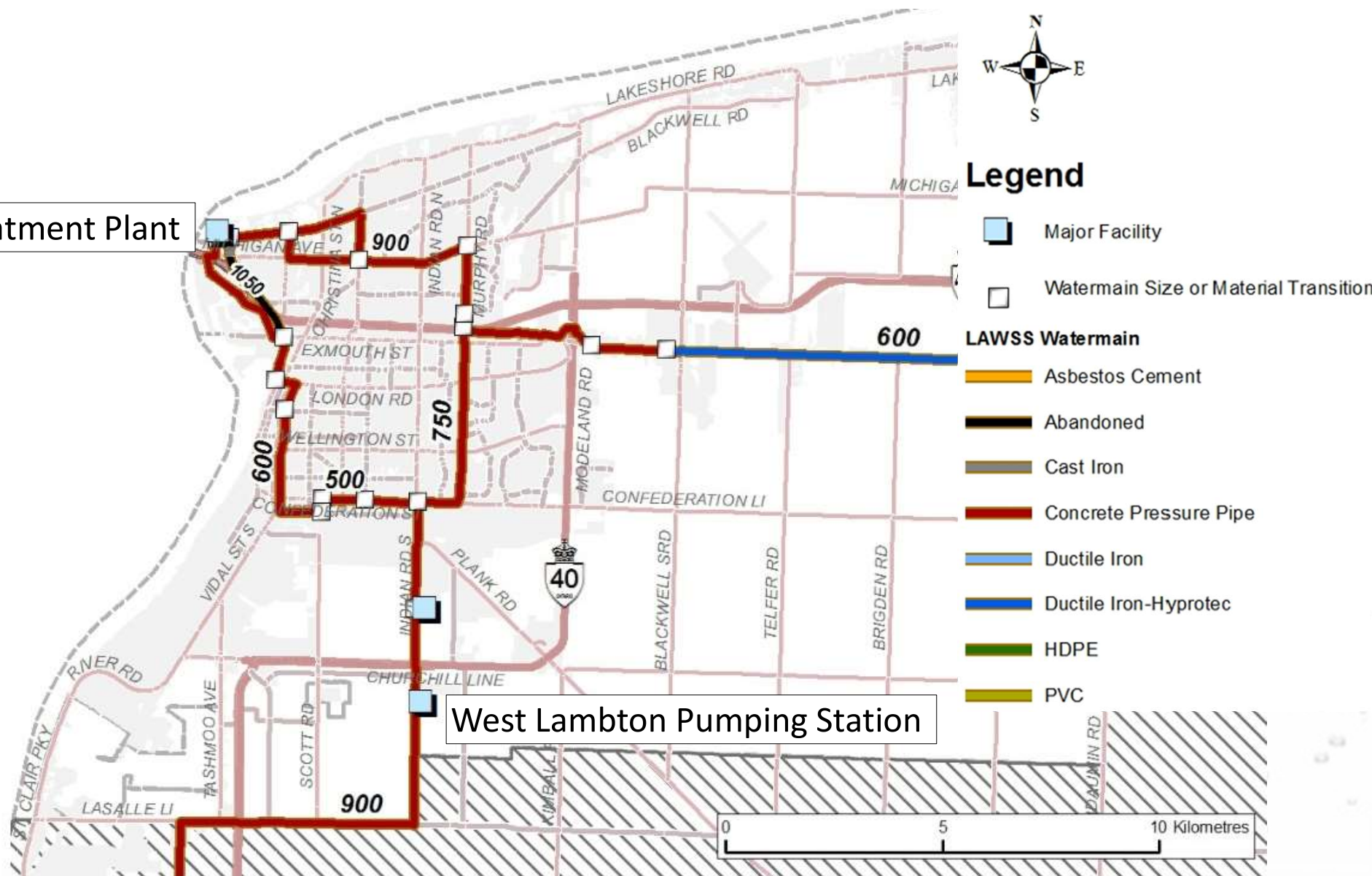
- The Municipality of Lambton Shores uses $\approx 2\%$ of water treated by LAWSS and therefore pays for $\approx 2\%$ of the overall LAWSS Budget.





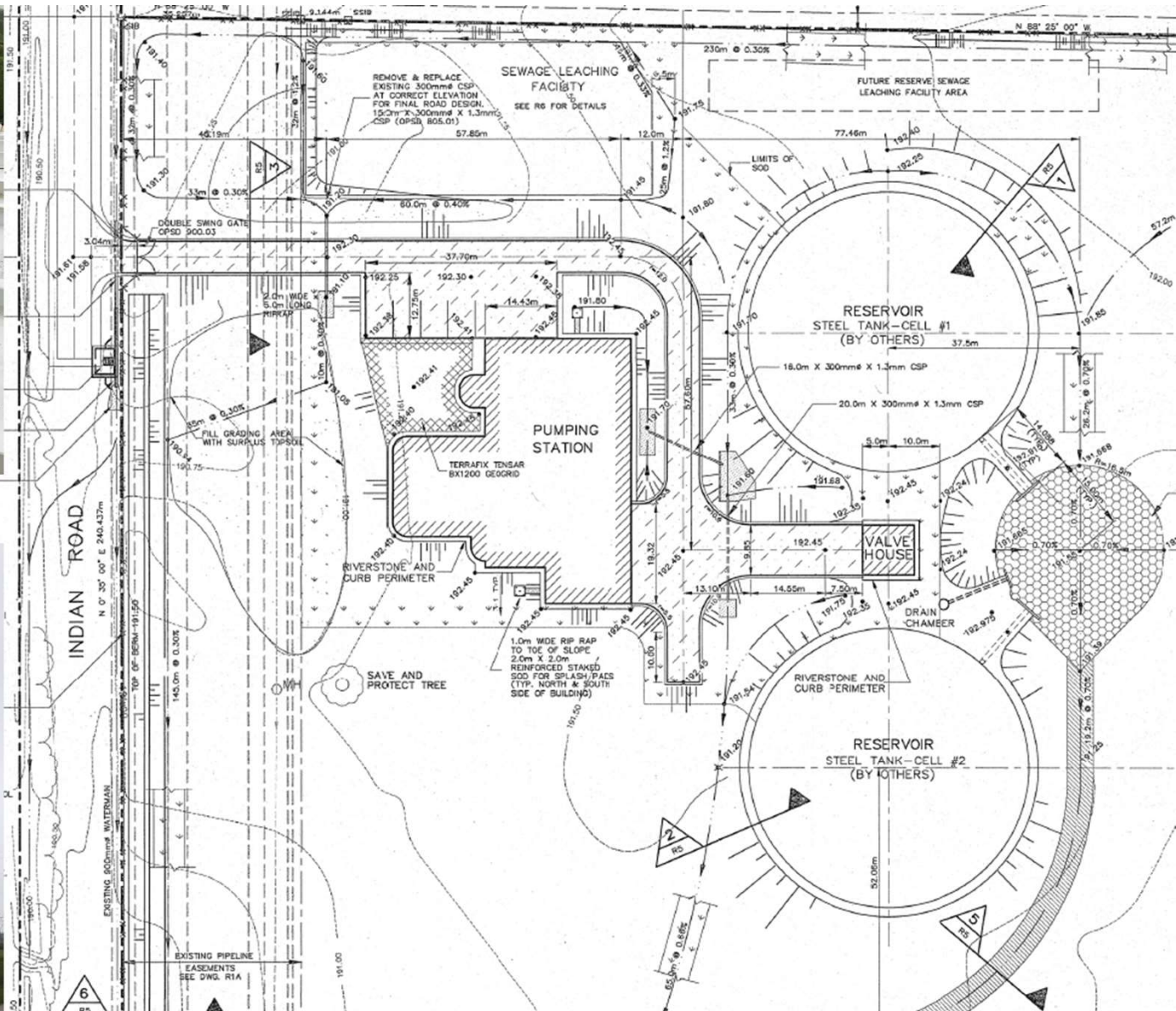


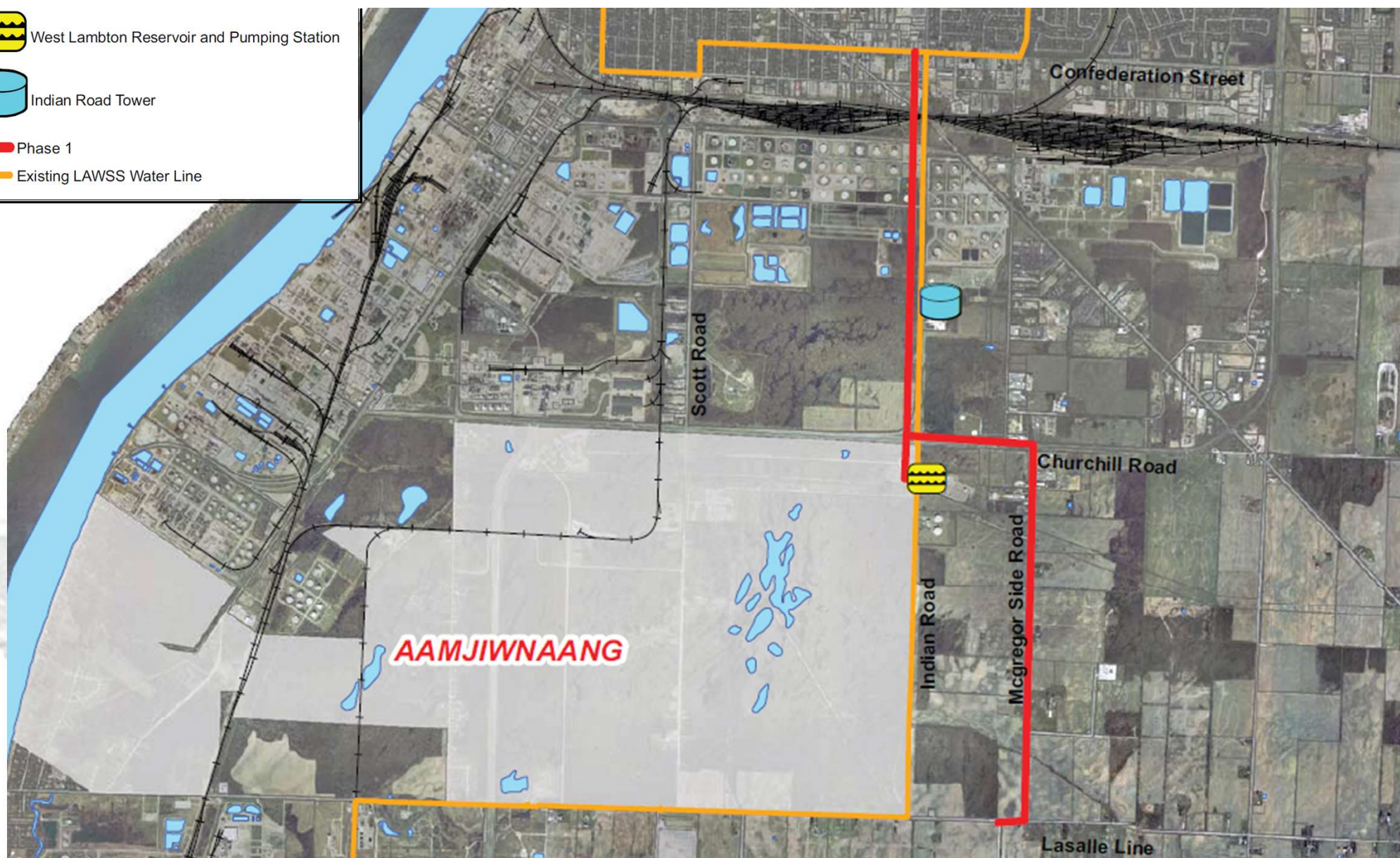
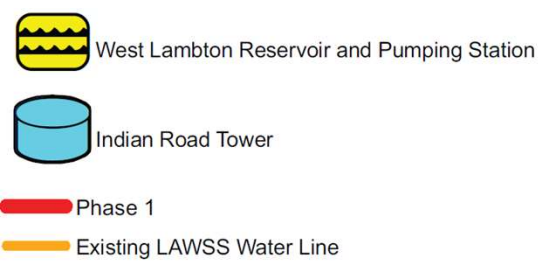
Water Treatment Plant

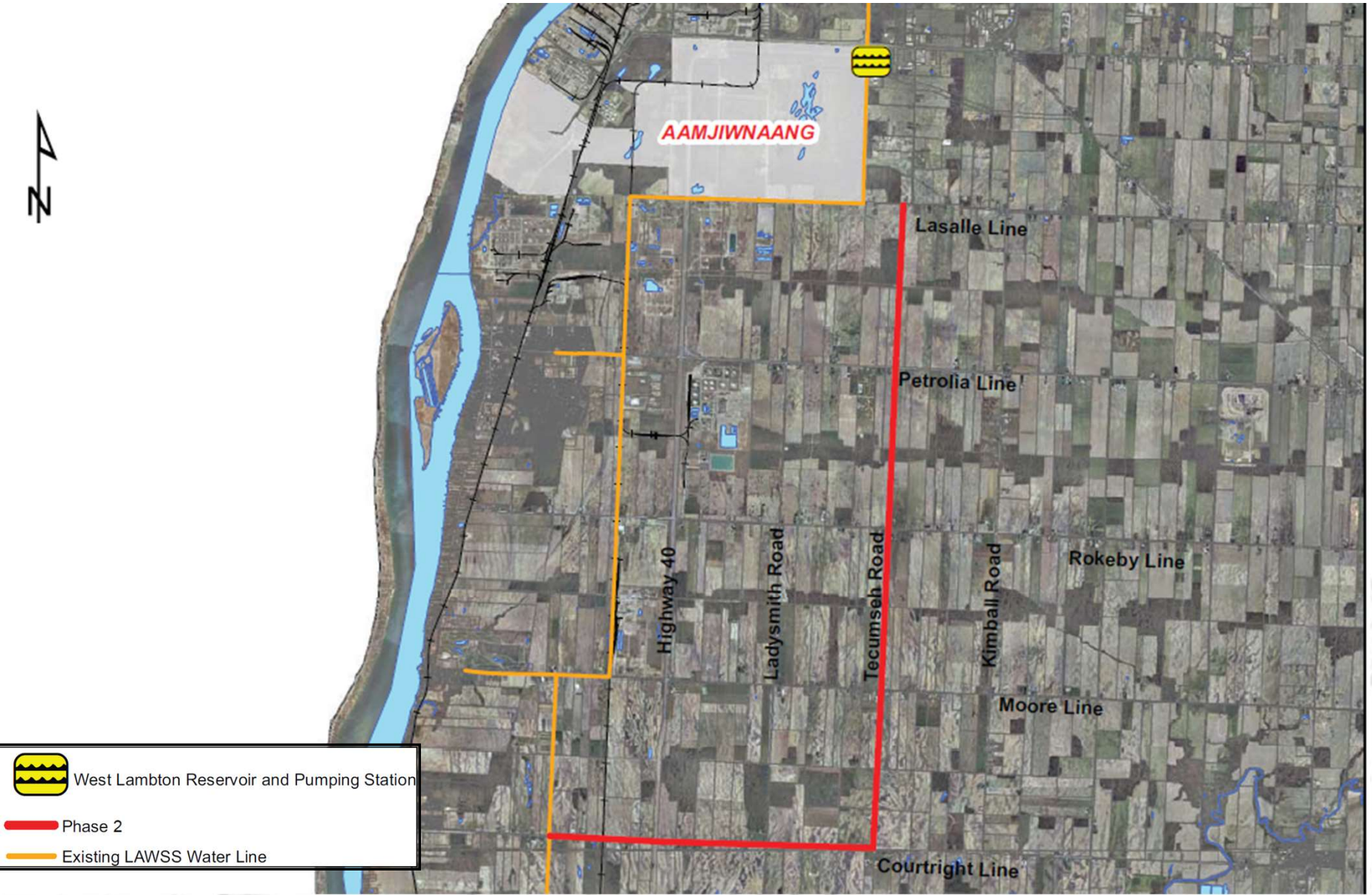


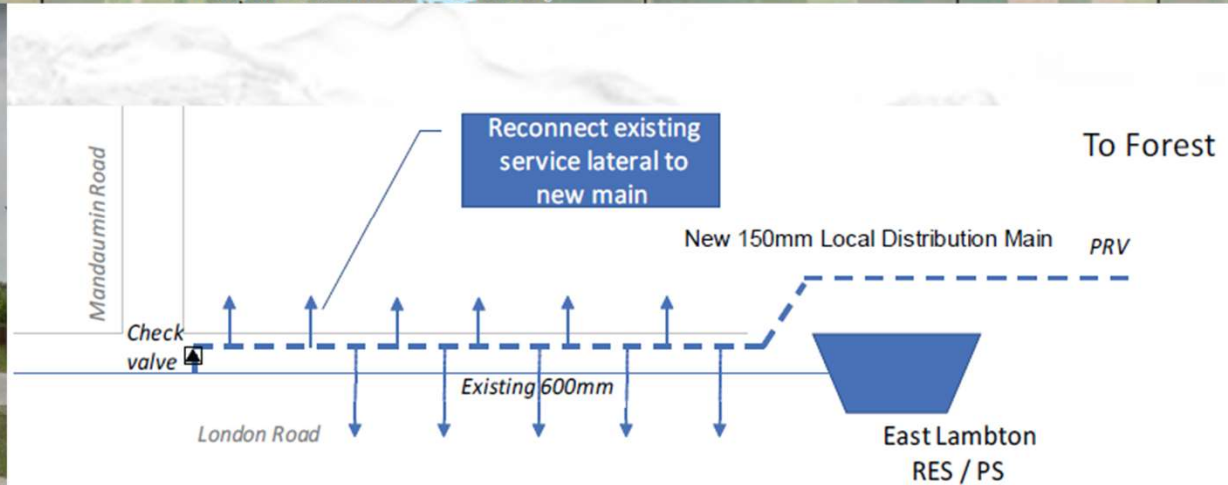
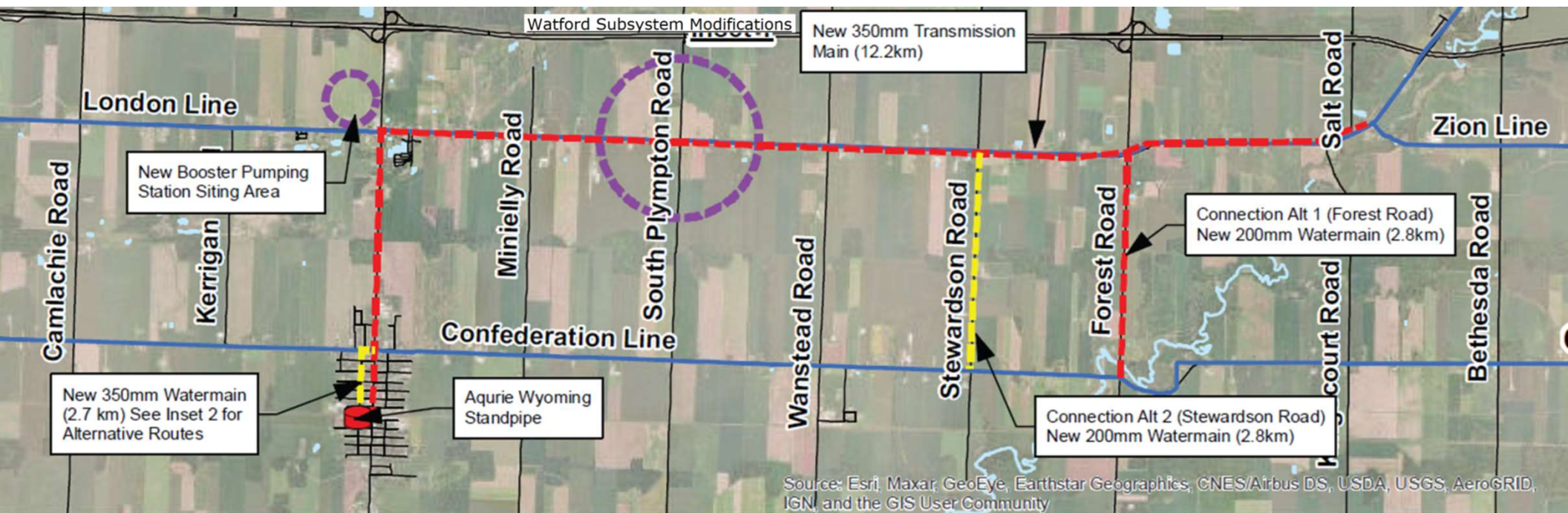
Target of Joint Application for Funding (\$135 million).

- Critical pipeline redundancy and resiliency initiatives (\$75 million).
 - *Twinning between Confederation Road and West Lambton Pumping Station.*
 - *Grid Reinforcement south of West Lambton Pumping Station.*
- Capacity improvement supporting region-wide growth (\$45 million).
 - *East Lambton Booster Station fill constraints.*
 - *West Lambton Pumping Station fill constraints.*
 - *Watford Standpipe fill constraints.*
- Critical infrastructure renewal (\$15 million)
 - *West Lambton Pumping Station Reservoir Renewal.*









LAWSS Strategy in 2022:

Step #1-

Determine level of Municipal Support for Joint Funding Application for LAWSS Projects.

Step #2-

Determine Municipal Member's tolerance for utilizing debt to achieve LAWSS Capital Program.
(based on Step #1)

Step #3-

Develop updated water rate forecast for LAWSS System over 20-year planning horizon.
(based on Step #1 & #2)

Step 1: Determine level of Municipal support for Joint Funding Application for LAWSS Projects

LAWSS requests support from the Municipality of Lambton Shores Municipal Council for a Joint Funding Application and commitment to its portion (approximately 2%) of 1/3 of \$135 million over the next twenty years for LAWSS Capital Projects.

