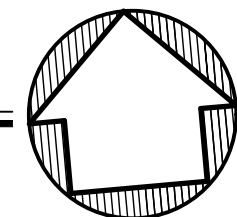


# SITE PLAN

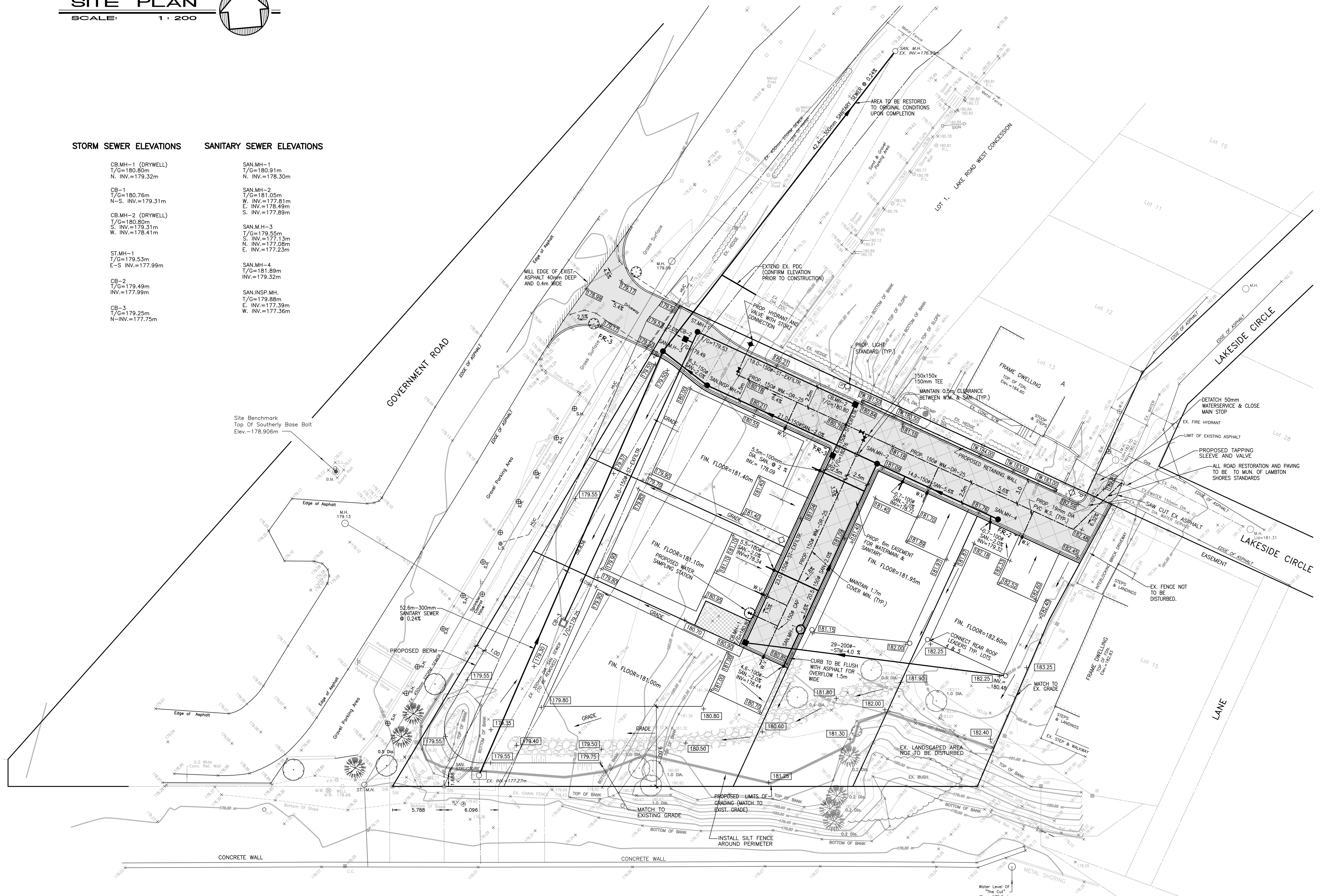
SCALE: 1:200



## STORM SEWER ELEVATIONS      SANITARY SEWER ELEVATIONS

- |  |  |
|--|--|
| CB.MH-1 (DRYWELL)<br>T/G=180.80m<br>N. INV.=179.32m<br><br>CB-1<br>T/G=180.76m<br>N-S. INV.=179.31m<br><br>CB.MH-2 (DRYWELL)<br>T/G=180.80m<br>S. INV.=179.31m<br>W. INV.=178.41m<br><br>ST.MH-1<br>T/G=179.53m<br>E-S. INV.=177.99m<br><br>CB-2<br>T/G=179.49m<br>INV.=177.99m<br><br>CB-3<br>T/G=179.25m<br>N-INV.=177.75m | SAN.MH-1<br>T/G=180.91m<br>N. INV.=178.30m<br><br>SAN.MH-2<br>T/G=181.05m<br>W. INV.=177.81m<br>E. INV.=178.49m<br>S. INV.=177.89m<br><br>SAN.MH-3<br>T/G=179.55m<br>S. INV.=177.13m<br>N. INV.=177.08m<br>E. INV.=177.23m<br><br>SAN.MH-4<br>T/G=181.89m<br>INV.=179.32m<br><br>SAN.INSP.MH.<br>T/G=179.88m<br>E. INV.=177.39m<br>W. INV.=177.36m |
|--|--|

Site Benchmark  
Top Of Southerly Base Bolt  
Elev.=178.906m

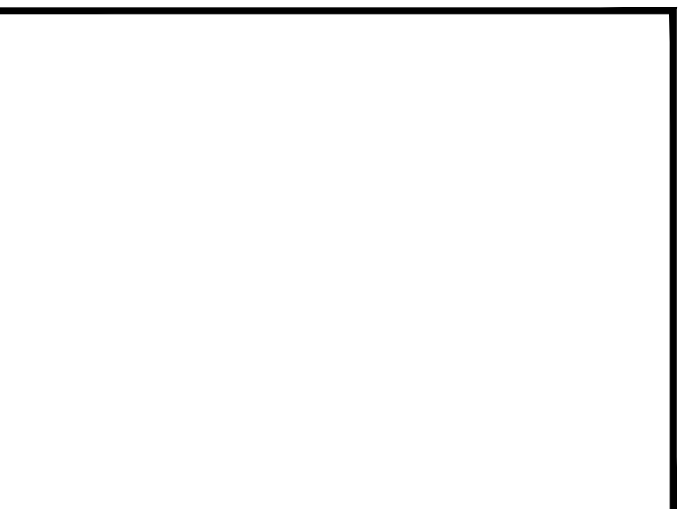


"The Cut"

UPDATED TO CURRENT STANDARDS	NOV. 16/20	△
FURTHER REVISIONS	JUNE. 9/10	△
NEW LOTS LAYOUT	MAY. 5/10	△
ADDITIONAL REVISIONS	OCT. 2/08	△
ADDITIONAL REVISIONS	SEPT. 22/08	△
SANITARY SEWER REVISIONS	AUG. 25/08	△
REVISIONS	JULY 11/08	△
REVISIONS	JUNE 19/08	△
revisions	date	no.

CONTRACTORS MUST CHECK AND VERIFY ALL DIMENSIONS AND REPORT ANY DISCREPANCY TO THIS FIRM BEFORE PROCEEDING WITH THE WORK

A - detail no.  
B - location sheet  
C - detail sheet



**SPRIET ASSOCIATES**

LIMITED  
architects  
LONDON LTD.  
engineers

155 york street - london - N6A 1A8  
phone: (519) 672-4100 fax: (519) 433-9351  
e-mail: mail@spriet.on.ca

**VIEW WEST  
GRAND BEND, ONTARIO**

24 GOVERNMENT ROAD  
ART BLUMAS

drawing title:  
**SITE SERVICES**

date: JUNE 13, 2008      drawing no.:  
scale: AS NOTED  
drawn by: AH  
project no.: 220221

**SP2**