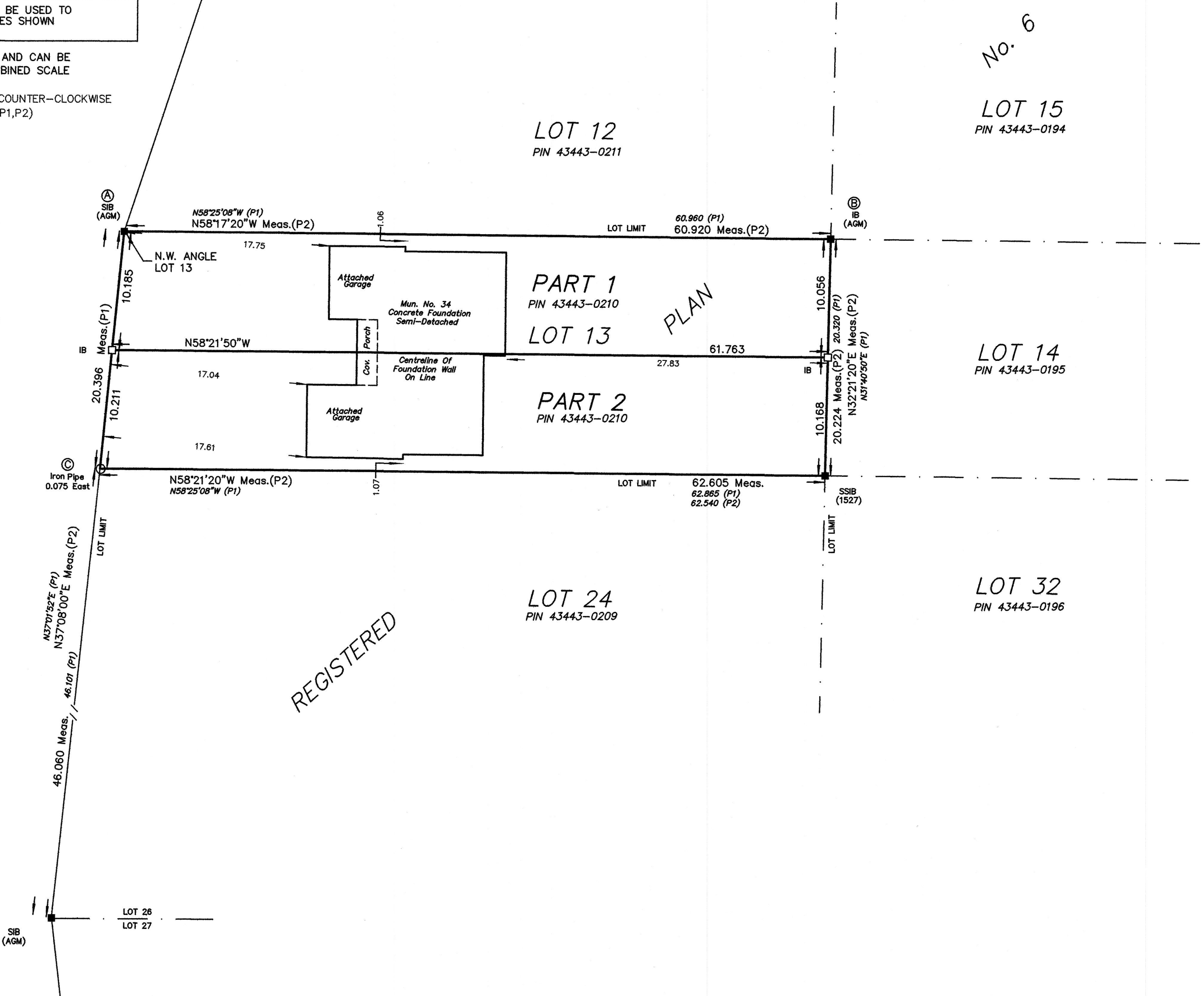


INTEGRATION DATA		
COORDINATES ARE DERIVED FROM GPS OBSERVATIONS USING SMARTNET NETWORK AND ARE REFERRED TO UTM ZONE 17 (81° WEST LONGITUDE) NAD83 (CSRS) EPOCH 2010 COORDINATE VALUES ARE TO A RURAL ACCURACY IN ACCORDANCE WITH SECTION 14(2) OF O.REG.216/10		
POINT ID	NORTHING	EASTING
A	4795673.53	438268.33
B	4795641.52	438320.13
C	4795657.24	438256.09
CAUTION: COORDINATES CANNOT IN THEMSELVES, BE USED TO RE-ESTABLISH CORNERS OR BOUNDARIES SHOWN ON THIS PLAN.		

DISTANCES SHOWN ON THIS PLAN ARE GROUND AND CAN BE  
CONVERTED TO GRID BY MULTIPLYING BY A COMBINED SCALE  
FACTOR OF 0.99956  
FOR BEARING COMPARISONS, A ROTATION OF 0°52'52" COUNTER-CLOCKWISE  
CAN BE APPLIED TO MATCH BEARINGS ON (P1,P2)

ALBERTA STREET  
(BY-LAW No. 303, NOVEMBER 3, 1975 - 20.117 MIDE)  
PIN 43443-0255



No. 6  
LOT 15  
PIN 43443-0194

LOT 14  
PIN 43443-0195

LOT 32  
PIN 43443-0196

LOT 12  
PIN 43443-0211

PART 1  
PIN 43443-0210

PART 2  
PIN 43443-0210

LOT 24  
PIN 43443-0209

I REQUIRE THIS PLAN TO BE DEPOSITED UNDER THE LAND TITLES ACT	PLAN 25R-
DATE: _____	RECEIVED AND DEPOSITED
_____	DATE: _____
D.A. CULBERT ONTARIO LAND SURVEYOR	REPRESENTATIVE FOR LAND REGISTRAR FOR THE LAND TITLES DIVISION OF LAMBTON (No 25)

SCHEDULE			
PART	LOT	PLAN	PIN
1	Part Of LOT 13	6	Part Of PIN 43443-0210
2	Part Of LOT 13		Part Of PIN 43443-0210

THIS PLAN COMPRISES ALL OF PIN 43443-0210

PLAN OF SURVEY  
OF ALL OF  
LOT 13  
REGISTERED PLAN No. 6  
VILLAGE OF GRAND BEND  
MUNICIPALITY OF LAMBTON SHORES  
COUNTY OF LAMBTON  
SCALE 1:300  
Metric  
2025  
D. CULBERT LTD.  
ONTARIO LAND SURVEYOR

- NOTES AND LEGEND
- BEARINGS HEREON ARE GRID (SEE INTEGRATION CHART FOR DETAILS)
- DENOTES MONUMENTATION FOUND
  - DENOTES MONUMENTATION PLANTED
  - DENOTES IRON PIPE SET AS ORIGINAL MONUMENTATION  
ON REGISTERED PLAN No. 6
  - SIB DENOTES 2.5cm sq. STANDARD IRON BAR
  - SSIB DENOTES 2.5cm sq. SHORT STANDARD IRON BAR
  - IB DENOTES 1.6cm sq. IRON BAR
  - AGM DENOTES ARCHIBALD GRAY & MCKAY LTD., O.L.S.
  - 1527 DENOTES D. CULBERT LTD., O.L.S.
  - OU DENOTES ORIGIN UNKNOWN
  - P1 DENOTES REGISTERED PLAN No. 6
  - P2 DENOTES A PLAN BY (1527) PLAN 2-GA-1289-B
- ALL PINS ARE SUFFIXED (LT) UNLESS NOTED (R)

SURVEYOR'S CERTIFICATE:

I CERTIFY THAT:

1) THIS SURVEY AND PLAN ARE CORRECT AND IN ACCORDANCE WITH  
THE SURVEYS ACT, THE SURVEYORS ACT AND THE LAND TITLES ACT  
AND THE REGULATIONS MADE UNDER THEM.

2) THE SURVEY WAS COMPLETED ON THE 13TH DAY OF DECEMBER, 2024

JANUARY 27, 2025

D.A. CULBERT  
ONTARIO LAND SURVEYOR

THIS PLAN OF SURVEY RELATES TO AOLS PLAN SUBMISSION FORM  
NUMBER V-90764

D. CULBERT LTD. ONTARIO LAND SURVEYOR GODERICH, ONTARIO PHONE: 519-524-5321	ONTARIO DCL LAND SURVEYOR
---	---------------------------------

DRAWN BY: BDCS CHECKED BY: DAC	DIGITAL FILE: GB2402R1 FILE No: GB-0006-0-13	PLAN No: 2-GZ-2615
-----------------------------------	---	-----------------------

METRIC: DISTANCES AND CO-ORDINATES SHOWN ON THIS PLAN  
ARE IN METRES AND CAN BE CONVERTED TO FEET BY  
DIVIDING BY 0.3048