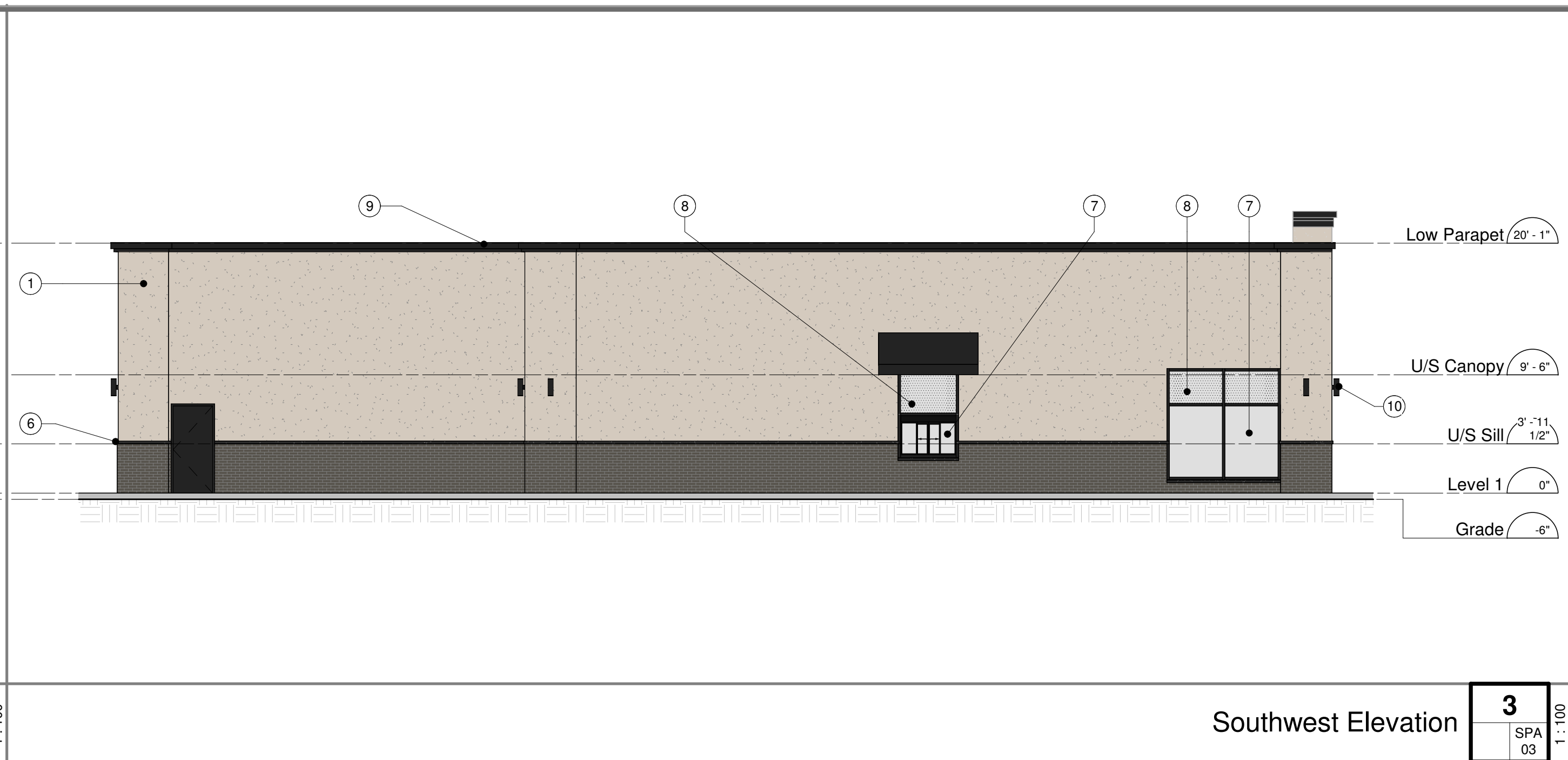


Northeast Elevation **4**
 SPA 03 1:100

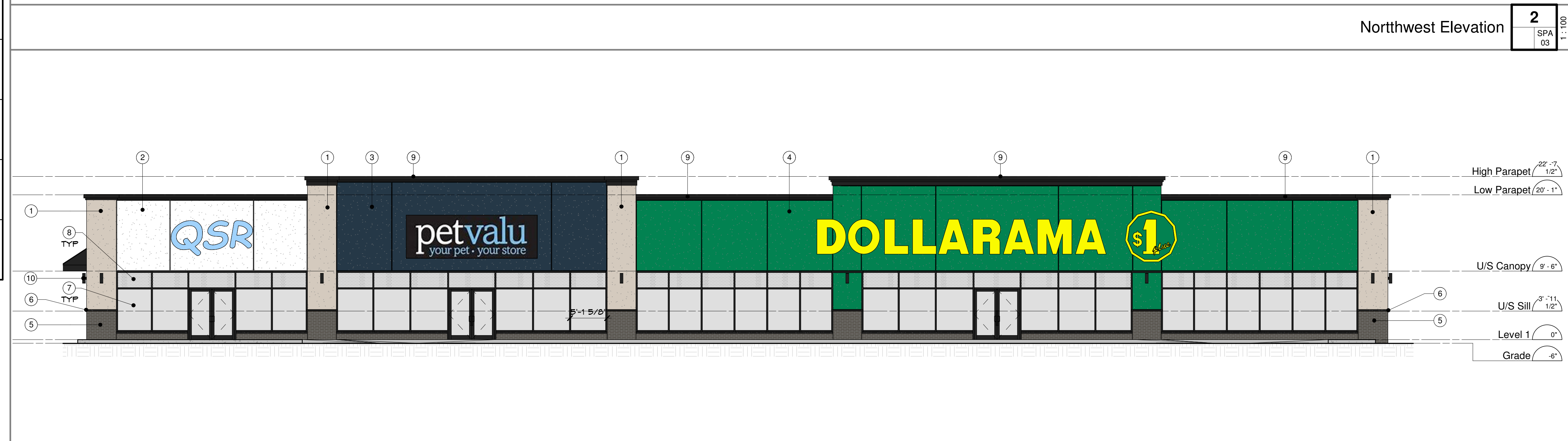


Southwest Elevation **3**
 SPA 03 1:100

| Exterior Finish Legend | |
|------------------------|---|
| Symbol | Panel Type |
| ① | EIFS WALL FINISH MANUFACTURER: STO COLOUR: STO 16048 |
| ② | EIFS WALL FINISH MANUFACTURER: STO COLOUR: STO 16048 |
| ③ | EIFS WALL FINISH MANUFACTURER: STO COLOUR: STO 16048 |
| ④ | EIFS WALL FINISH MANUFACTURER: STO COLOUR: STO 16048 |
| ⑤ | BRICK MANUFACTURER: ARRISGRAFT/CANADA BRICK SERIES: ARCHITECTURAL SERIES COLOUR: IRONSTONE |
| ⑥ | STONE SILL MANUFACTURER: ED'S CONCRETE PRODUCTS SERIES: SL-46 COLOUR: BLACK DIMENSIONS: 6" X 2 1/2" X 2" |
| ⑦ | VISION GLASS C/W BLACK ALUMINUM MULLIONS |
| ⑧ | SPANDREL (GLASS) PANEL C/W BLACK ALUMINUM MULLIONS |
| ⑨ | PARAPET FLASHING CUSTOM FLASHING MATERIAL: PREFINISHED METAL COLOUR: BLACK |
| ⑩ | EXTERIOR LIGHT FIXTURE REFER TO ELECTRICAL |



Northwest Elevation **2**
 SPA 03 1:100



Southeast Elevation **1**
 SPA 03 1:100

Consultants

Shopping Centre
 Delmart Holdings
 80 King St E
 Forest, Ontario

Revisions

| No. | Date | Description |
|-----|----------------------|-----------------------------|
| 03 | September 12th, 2024 | Issued for OPA / ZBA / SPA |
| 02 | June 18th, 2024 | Issued for Pre-consultation |
| 01 | June 12th, 2024 | 90% Client Review |

| | |
|-------------------------------|--------|
| Issued to / from: | |
| Drawn By: | Scale: |
| Checked By: | Date: |
| Sheet Number: PFL/CS 01/12/24 | |

L:\2024\Storage\Project Docs\24-015 Delmart Holdings Forest Development\02 Drawings\24-015 Delmart Holdings Forest Development (SD-R4).rvt

