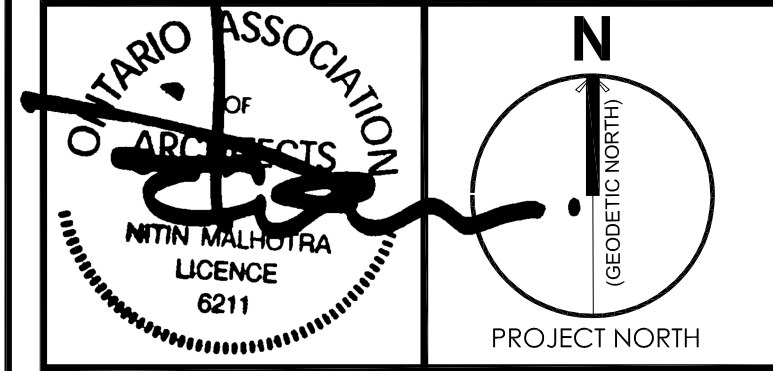


KEY PLAN



**n Architecture Inc**  
 PRINCIPAL: NITIN MALHOTRA, ARCHITECT.  
 9120 Leslie Street, Suite-208  
 Richmond Hill, Ontario. L4B 3J9  
 T : 4 1 6 . 2 5 6 . 9 7 4 1  
 E: info@narchitecture.com  
 www.narchitecture.com



06 SEPT 2024

6th SEPT. 2024  
 NOT FOR CONSTRUCTION  
 ISSUED FOR SPA-3

No.	Date	Version	Dwn.
8.	06 SEPT. 2024	ISSUED FOR SPA-3	JH.
7.	20 JUN 2024	ISSUED FOR SPA-2	JH.
6.	10 JUN 2024	ISSUED FOR REVIEW	JH.
5.	07 MAR 2024	ISSUED FOR MUNICIPALITY REVIEW	JH.
4.	11 DEC 2023	ISSUED FOR SPA-1	JH.
3.	14 SEPT 2023	ISSUED FOR MUNICIPALITY REVIEW	JH.
2.	21 JUL 2023	ISSUED FOR COORDINATION	JH.
1.	20 MAY 2022	ISSUED FOR PRE CON.	JH.

This drawing is copyright property of 'n Architecture Inc'. Not to be reproduced. Contractor must verify all job dimensions, drawings, details and specifications and report any discrepancies to the architect before proceeding with work.

PROJECT:  
**GAS STATION AT  
 KING ST. E. &  
 AMTELECOM PKWY.  
 FOREST, ON.**

DRAWING TITLE:  
**CONTEXT  
 SITE PLAN**

DRAWN BY: JH      DATE: 12 MARCH 2022  
 CHECKED BY: NM      SCALE: AS NOTED  
 PROJECT NO.:      DRAWING NO.:

**22-28      A-1.6**

1 CONTEXT SITE PLAN  
 A-1.6 SCALE: 1:700